

SA 210 A1 Chemical composition, physical composition, SEM microstructure

SPEC (chemical and physical composition) of SA 210 A1

Chemical Composition of SA-210 A1					
Grade	The Element (%)				
SA-210 A1	C	Si	Mn	P	S
	0.27 max	0.10	0.93 max	0.035 max	0.035 max
	Ni	Cr	Ni + Cr	Mo	
	N/A	N/A	N/A	N/A	

SA-210 A1 Mechanical properties				
The tensile strength(MPa)	Yield strength(MPa)	Elongation(%)	Hardness(Hardness)	
≥ 415	≥ 255	≥ 30	Brinell	Rockwell B
			143	79

Microstructure Picture of SA 210 A1

Ferrite와 pearlite의 전형적인
탄소강 조직이 관찰됨.

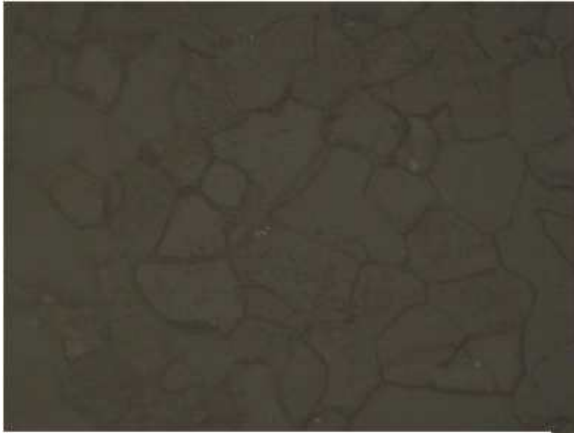


X 200



X 500





X 1000

